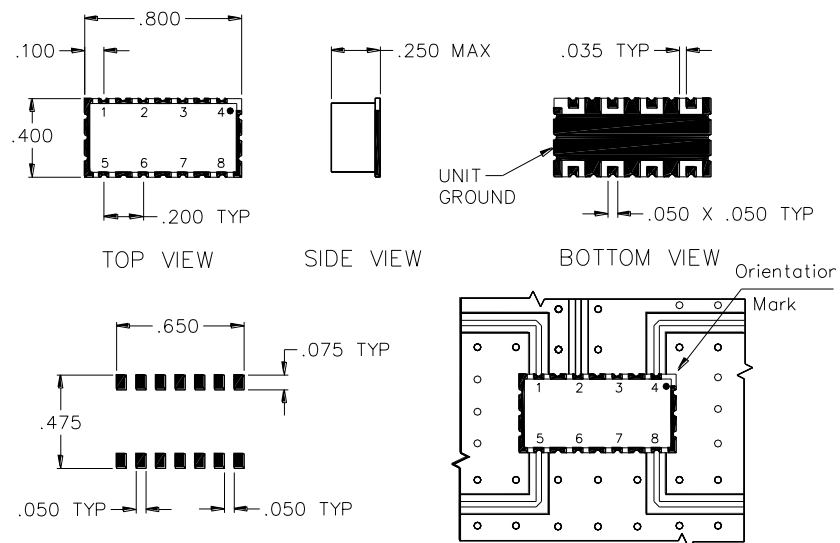




### Port Configuration

|          |   |
|----------|---|
| Output-1 | Port-1                                    |
| Output-2 | Port-4                                    |
| Output-3 | Port-5                                    |
| Output-4 | Port-8                                    |
| Input    | Port-2                                    |
| Ground   | Ports:<br>All unused half<br>plated holes |



Board Installation Pattern

**TYPICAL APPLICATION**  
All half plated thru holes on all sides need to be grounded to main board

### Electrical Specifications:

|  |                   |        |     |
|--|-------------------|--------|-----|
| Frequency Range:   | 5 – 1000          | Mhz    |     |
| Insertion Loss:  | 1.6               | dB     | Max |
| Amplitude Balance:   | 0.5               | dB     | Max |
| Isolation:   | 20                | dB     | Max |
| Phase Balance:   | 5                 | degree | Max |
| VSWR Input:  | 1.50:1            |        | Max |
| VSWR Output:   | 1.50:1            |        | Max |
| Power Input:   | 1                 | Watt   | Max |
| Operating Temperature:                                     | -40 °C to +85 °C  |        |     |
| Storage Temperature:                                       | -55 °C to +100 °C |        |     |
| Theoretical loss for 2-way divider is 3.0 dB               |                   |        |     |
| Input power is specified for load VSWR better than 1.20:1. |                   |        |     |

# SigaTek

423 Black Oak Ridge Rd.  
Wayne, NJ 07470  
Ph: 973-706-8475, Fax: 973-832-4435  
[www.sigatek.com](http://www.sigatek.com)

## SP11K4

**Power Divider 4-way  
Surface Mount**

Dimensions are in inches and (mm)  
Decimal Tolerance:  
2 place +- 0.020  
3 place +- 0.010

**CAGE CODE : 69UC1**

Notes: All dimensions are typical unless they are specified.  
Specifications are subject to change at any time without any notice.  
Copy or distribution of this drawing is not allowed without Sigatek's approval.