



### Waveguide WR28 4-Way Power Combiner 26.4 ~ 40GHz (10-20% BW)



#### Features

- Low Insertion Loss
- Excellent Temperature Stability

#### Typical Applications

- Wireless Infrastructure
- RF Microwave & VSAT
- Military & Aerospace
- Test Instrument

#### Electrical Specifications, $T_A=25\text{ }^\circ\text{C}$

| Parameters          | Min.  | Typ. | Max. | Units |
|---------------------|---|------|------|-------|
| Frequency Range     | 26.4  |      | 40   | GHz   |
| Insertion Loss      |   |      | 0.8  | dB    |
| VSWR                |   |      | 1.20 | : 1   |
| Amp Balance         |   |      | 0.5  | dB    |
| Power Handling (CW) |   |      | 200  | W     |
| Bandwidth           | 10-20 (Please Specify When Ordering)        |      |      | %     |
| Impedance           | 50  |      |      | Ohms  |
| Waveguide Type      | WR28  |      |      |       |
| Flange type         | Cover                                       |      |      |       |
| Flange Holes        | Through                                     |      |      |       |
| Material            | Aluminum                                    |      |      |       |
| Finish              | Body painted with gray / black epoxy enamel |      |      |       |

Waveguide WR28 4-Way Power Combiner 26.4 ~ 40GHz



**Environmental Specifications and Test Standards**

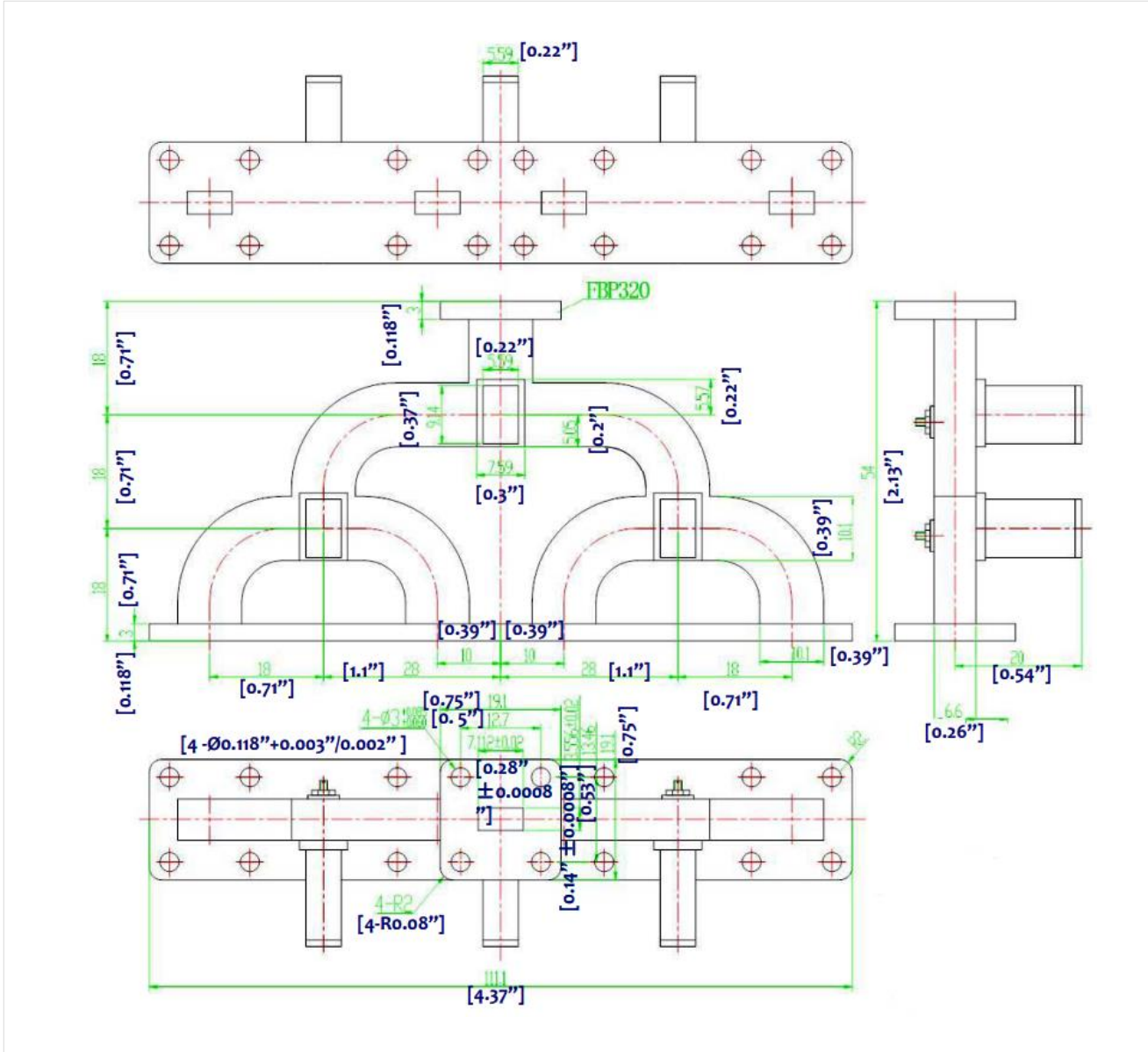
| Parameter                        | Standard      | Description   |
|----------------------------------|---------------|---|
| Operational Temperature          | MIL-STD-39016 | -40°C~+85°C   |
| Storage Temperature              |               | -55°C~+125°C  |
| Thermal Shock                    |               | 1 Hour@ -45°C → 1 Hour @ +85°C (5 Cycles)   |
| Random Vibration                 |               | Acceleration Spectral Density 6 (m/s)<br>Total 92.6 RMS   |
| Electrical & Temperature Burn In |               | Temperature +85°C for 72 Hours  |
| Shock                            |               | 1. Weight >20g, 50g half sine wave for 11ms, Speed variation 3.44m/s<br>2. Weight <=20g, 100g Half sine wave for 6ms, Speed variation 3.75m/s<br>3. Total 18 times (6 directions, 3 repetitions per direction). |
| Altitude                         |               | Standard: 30,000 Ft (Epoxy Sealed Controlled Environment)<br>Optional: Hermetically Sealed (60,000 ft. 1.0 PSI min)   |
| Hermetically Sealed (Optional)   | MIL-STD-883   | MIL-STD-883 (For Hermetically Sealed Units)   |

**Waveguide WR28 4-Way Power Combiner 26.4 ~ 40GHz**



**Outline Drawing:**

All Dimensions in mm [inches]



**Waveguide WR28 4-Way Power Combiner 26.4 ~ 40GHz**

**Important Notice**

The information contained herein is believed to be reliable. RF-Lambda makes no warranties regarding the information contained herein. RF-Lambda assumes no responsibility or liability whatsoever for any of the information contained herein. RF-Lambda assumes no responsibility or liability whatsoever for the use of the information contained herein. The information contained herein is provided "AS IS, WHERE IS" and with all faults, and the entire risk associated with such information is entirely with the user. All information contained herein is subject to change without notice. Customers should obtain and verify the latest relevant information before placing orders for RF-Lambda products. The information contained herein or any use of such information does not grant, explicitly or implicitly, to any party any patent rights, licenses, or any other intellectual property rights, whether with regard to such information itself or anything described by such information. RF-Lambda products are not warranted or authorized for use as critical components in medical, life-saving, or life sustaining applications, or other applications where a failure would reasonably be expected to cause severe personal injury or death.