

DESCRIPTION:

PMI MODEL NUMBER DTA-30M6G-60-CD-1 IS A 8 BIT PROGRAMMABLE 60 DB PIN DIODE ATTENUATOR WITH STEP RESOLUTION AS LOW AS 0.25 DB OVER THE FREQUENCY RANGE OF 30 MHz TO 6.0 GHz.

SPECIFICATIONS:

- FREQUENCY: 0.03 GHz TO 6.0 GHz
- MEAN ATTENUATION RANGE 60dB
- INSERTION LOSS 4.0dB MAX
- RETURN LOSS: -8.5dB MAX.
- MAX POWER RATING: +20dBm MIN
The maximum total input power that the device can handle without adversely impacting the operating characteristics of the device.
- ATTENUATION FLATNESS:
 - @ 10 dB ±1.0 dB
 - @ 20dB ±1.5 dB
 - @ 40dB ±3.0 dB
 - @ 60dB ±5.0 dB
- ACCURACY OF ATTENUATION
 - 0 dB TO 30 dB ±1.0 dB
 - 30 dB TO 50 dB ±1.3 dB
 - 50 dB TO 60 dB ±1.5 dB
- SWITCHING TIME 50 usec MAX
- DIGITAL CONTROL 8 BIT Binary TTL
- INPUT TRACKING: ATTENUATION MUST TRACK INPUT VALUES MONOTONICALLY. WHEN CHANGING FROM ONE SETTING TO ANOTHER, THE ATTENUATION MUST REMAIN BETWEEN THE STARTING ATTENUATION AND THE FINAL ATTENUATION.
- POWER SUPPLY +12VDC @ 155mA MAX (10.8VDC minimum and 13.2VDC maximum)
- PWR/CTL CONNECTORS 15 PIN Micro-D-Female (MATING CONNECTOR SUPPLIED)
- RF CONNECTORS SMA - Female
- FINISH PAINTED GRAY

PIN NO:	J3 PIN FUNCTIONS
1	2dB
2	1dB
3	0.5dB
4	0.25dB (LSB)
5	GND
6	Not Used
7	Not Used
8	GND
9	Not Used
10	Not Used
11	+12VDC
12	32dB (MSB)
13	16dB
14	8dB
15	4dB

ENVIRONMENTAL RATINGS:

- TEMPERATURE: -40°C TO +85°C (OPERATING)
-65°C TO +125°C (STORAGE)
- HUMIDITY: MIL-STD-202F, METHOD 103B COND. B
- SHOCK: MIL-STD-202F, METHOD 213B COND. B
- VIBRATION: MIL-STD-202F, METHOD 204D COND. B
- ALTITUDE: MIL-STD-202F, METHOD 105C COND. B
- FUNGUS: MIL-STD-810C, METHOD 508.2
- TEMPERATURE CYCLE: MIL-STD-202F, METHOD 107

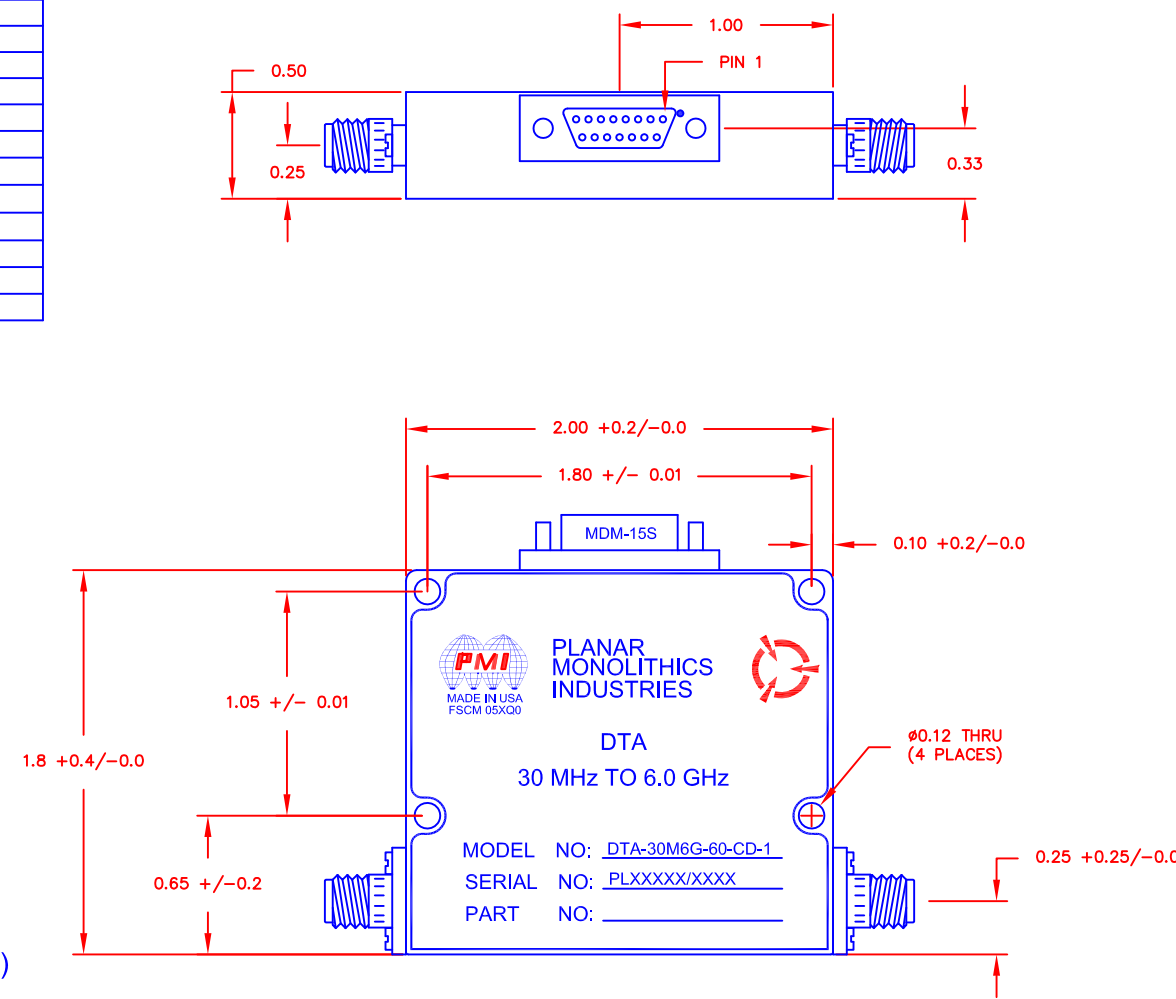
NOTE: THE ABOVE SPECIFICATIONS ARE SUBJECT TO CHANGE OR REVISION

- LOGIC INPUT
LOGIC "0" (BIT OFF) -0.3 to +0.8V
LOGIC "1" (BIT ON) +2.0 to +5.0V

ALL DIMENSIONS ARE IN INCHES
TOLERANCES:
X.XX ±0.020
X.XXX ±0.010

REVISIONS				
ZONE	REV.	DESCRIPTION	DATE	APPROVED
	A1	ORIGINAL RELEASE	2/11/11	
	A2	ECN # 13-0151	09/16/13	

MECHANICAL OUTLINE



PMI CONFIDENTIAL AND PROPRIETARY

PLANAR MONOLITHICS INDUSTRIES, INC.

7311-F GROVE ROAD
FREDERICK, MARYLAND 21704 USA
TEL: 301-662-5019 FAX: 301-662-1731
WEBSITE: www.pmi-rf.com
E-MAIL: sales@pmi-rf.com
ISO 9001 CERTIFIED



APPROVALS		DATE	TITLE			REV.
DRAWN <i>KM</i>		2/11/11	PRODUCT FEATURE			A2
CHECKED			DTA-30M6G-60-CD-1			
ISSUED	SIZE A	FSCM NO. 05XQ0	DWG NO. 27014801			
SCALE N:S			SHEET 1 OF 1			